

INTERVARSITY



• • • • •
ANNUAL REPORT 2016–2017



President Tom Lin with students

A 360-DEGREE VIEW OF TODAY'S COLLEGE CAMPUS

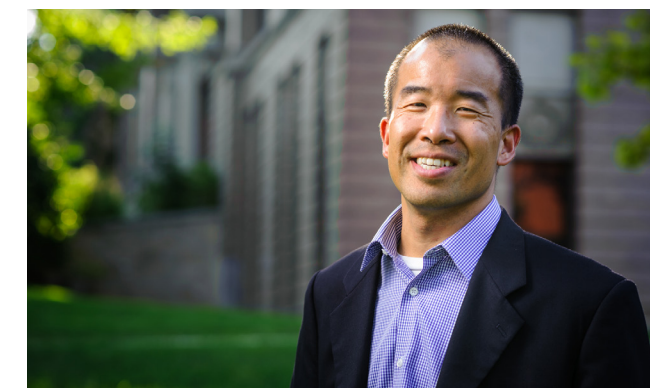
I've visited a lot of colleges and universities in my lifetime. Some characteristics—like intense conversations about world-changing ideas, athletic pride, high levels of stress—can be found at most schools. But when InterVarsity staff ministers step onto a campus, they see individual students and faculty—people as unique as the geographic setting, culture, and structure of the university they're on.

They see the leadership potential of fraternity and sorority students and their hunger for real purpose. They see the incredible gifts of Black students and their deep pain from the marginalization and discrimination they face on and off campus. They see the dedication of athletes and the extraordinary pressure they feel to continually perform at top levels. They see the joy of faculty members as they mentor students and the isolation they feel as perhaps the only Christian professor at their university. They see the eagerness of international students to experience a new culture, and the loneliness that comes from being so far from anything familiar. They see the stories and heartaches and dreams of hundreds of students and faculty.

I can't introduce you to each of those students and faculty members. I can, however, help you "step" onto campus in these pages and give you a 360-degree view of the world students, faculty, and InterVarsity campus ministers are living in. The deep divides in our culture are certainly present on campuses, which means prayer, Bible study, and compassionate, honest dialogue are needed more than ever. But, as you'll see, God is continuing to work powerfully through InterVarsity in the corners of colleges and universities across the U.S. His Word is bringing hope, and his reconciliation is bringing healing. And, even as we celebrate last year's growth, we're moving forward, looking all over campus—and on new campuses—for more students and faculty to invite into Scripture and into God's kingdom light. We can't wait to meet them.

For God's glory,

Tom Lin
President/CEO





-
-
-
-
-
-



“InterVarsity was instrumental in my theological understanding that the kingdom of God wasn’t limited within the walls of the church or fellowship group. Not only did learning about Christ’s rightful dominion over all aspects of my life influence my perspective of ambition, success, and purpose as a student, but it continues to influence those same perspectives as a working professional.”

—Michael Kuo, InterVarsity alumnus, Vice President/Director of Strategy, Commercial Operations, and Operational Excellence at Assessment Solutions

WHY THE CAMPUS?

When new students arrive on campus for their first year of college, they are naturally excited, nervous, sometimes overwhelmed. But InterVarsity staff ministers don’t just see over-eager first-year students. They see Bible study leaders and worship leaders and evangelists. And they see future engineers, teachers, nurses, counselors—students who will become next-door neighbors, cubicle-mates, church leaders, and community members who shape their spheres of influence.





“The university is a clear-cut fulcrum with which to move the world. Change the university and you change the world.”

—Dr. Charles Malik, former President of the United Nations General Assembly and Security Council

THE CAMPUS INFLUENCES THE WORLD

InterVarsity is immersed in the university world because we believe it's the most strategic place we can invest in to see God's kingdom spread to offices and operating rooms, courtrooms and concert halls, government buildings and global start-ups, slum communities and suburban schools.

Perhaps nowhere else but college campuses are people asking the questions students ask with as much passion and curiosity—questions like, *Who do I want to be? What should I do? What needs exist in the world? How can my skills make a difference? Will my life matter?*

The ways students choose to answer those questions will profoundly transform both the communities they land in after they graduate, and broader social, cultural, and vocational spheres.

And faculty play a primary role in helping students answer those questions. As experts in their fields, they mentor and train students in how to think about and contribute to the world. Their example strongly influences what their graduates will pursue, and who they'll pursue it for—their own glory or the good of others.

The potential for kingdom growth through a strategic, biblical presence on today's college campuses is immense.



“Too often Christians write off the campus as hopelessly detached from God’s presence and beyond the reach of his Holy Spirit. We repudiate this defeatist attitude. . . . God is the great active agent on . . . campuses; if he were not thus engaged, there would be little point to our efforts.”

—John W. Alexander, InterVarsity President, 1965–1981

THE CAMPUS NEEDS RENEWAL

We are also present on campus because the university world needs the hope of Jesus. Schools founded on biblical truths now sometimes try to keep religious groups off campus. Students and faculty wrestle with depression and anxiety. Divisions in politics, religion, gender, sexual identity, socio-economic status, and ethnicity and race get exacerbated in the smaller cultures of individual campuses.

We long to see God’s kingdom hope, power, reconciliation, and love redeem the systems, structures, and cultures of academia.

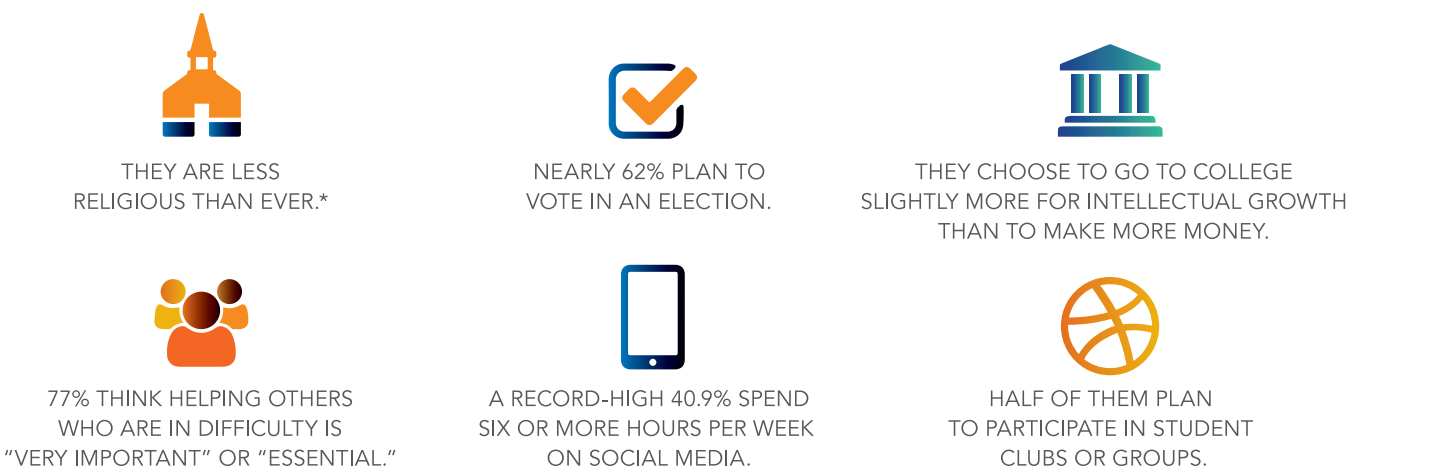
“InterVarsity has been the biggest part of my college career. It’s where I met some very dear friends, grew into a leader (which I never thought I was!), and got into a relationship with the Lord that has changed my life. My life is for Jesus now.”

—Megan, 2014 InterVarsity alumna, University of Buffalo, nursing major



EVERY GENERATION OF STUDENTS NEEDS JESUS

Today’s college students have distinct traits that will shape the world uniquely. As Beloit College’s annual “College Mindset List” notes about this year’s freshmen, a “phone” is primarily a device for texts, directions, and research, and “college student” is synonymous with “consumer who is borrowing a lot of money.” In addition, a 2016 national study of American college freshmen revealed that:



Imagine the impact these students could have if they spent time studying Scripture deeply in college and seeing its implications for all of life. As graduates, redeemed and empowered by Jesus, they could go forth to face the problems and opportunities in our complex world with love, humility, and skill.

Data taken from Kevin Eagan and others, *The American Freshman: National Norms for Fall 2016*, (Los Angeles: Higher Education Research Institute, UCLA, 2017).

*Nearly 31% identify themselves as agnostic, atheist, or of no religion.





WHY INTERVARSITY?

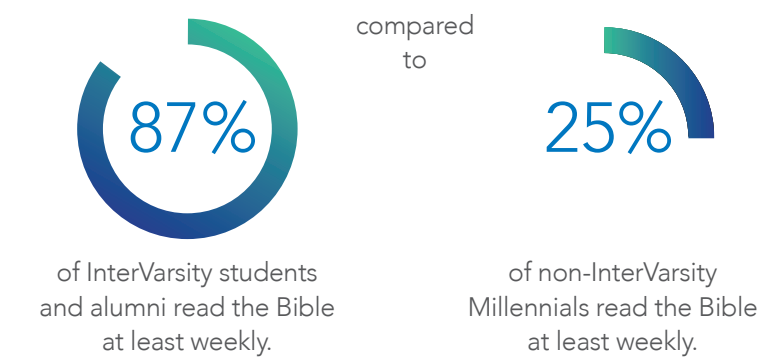
For over 75 years, InterVarsity has been present on campus, working to see God renew students, faculty, and colleges with his love and grace. And over those 75 years, we've sent more than a million world changers out from campus to be present in communities all over the world.

Today, we stand even more prepared to continue to participate in God's mission of producing flourishing disciples of Jesus at universities and colleges and sending them out to shed his kingdom light in the broken places of the world. The following traits are a few of the reasons why.



1 A DEEP LOVE FOR SCRIPTURE

InterVarsity students and faculty get deep into the Bible in ways that help them see the implications of the text for their own hearts, their dorms and classrooms, their communities, and their fields of study. Simply put, students and faculty consistently meet Jesus in Scripture through InterVarsity, and are transformed by him.



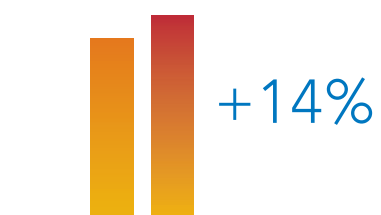
FROM A 2014 BARNA STUDY OF 18- TO 30-YEAR-OLDS



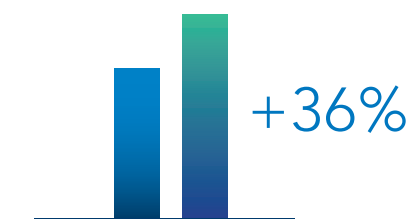


2 A CULTURE OF EVANGELISM AND PLANTING

InterVarsity student leaders across the country have caught a vision for joining God's work on their own campuses *and* at nearby campuses that might not have any Christian ministries present. In addition, planting new chapters for faculty, particularly as many longtime professors retire, continues to be a key strategy for InterVarsity to invest in the next generation of faculty.



Over the past 5 years, the number of InterVarsity chapters has grown by 14 percent to 1,015, our highest number ever.

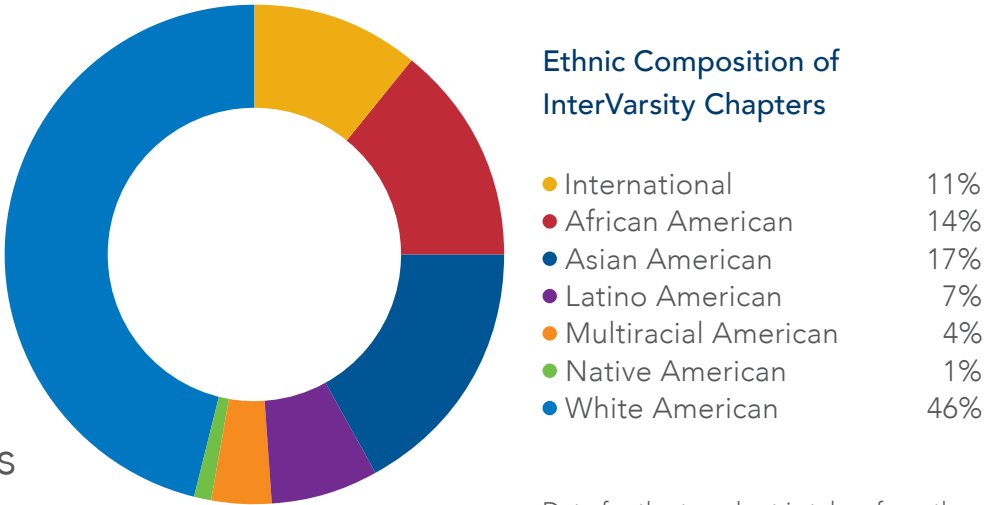
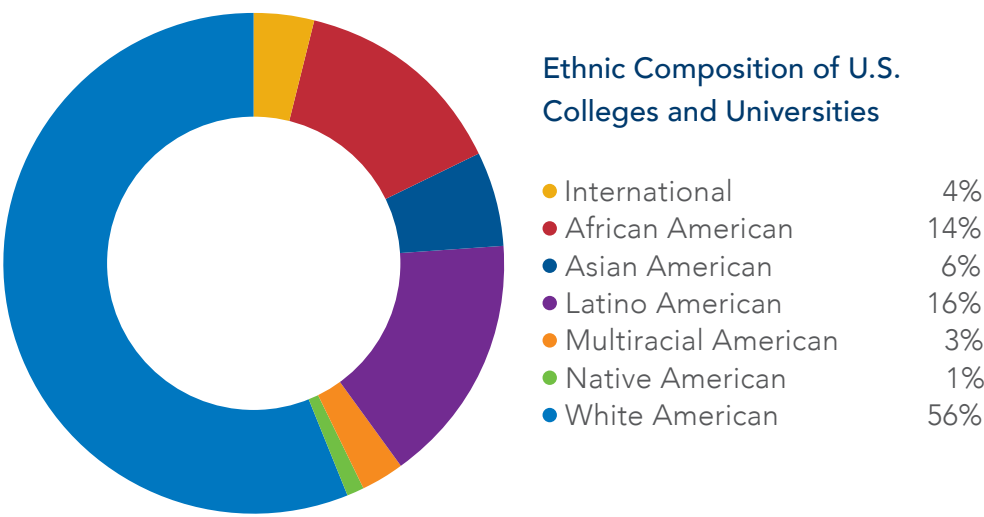


Over the past 5 years, the number of decisions for Christ has grown by 36 percent to 4,576, our highest number ever.



3 A COMMITMENT TO MULTIETHNICITY

Both our leadership and our chapters continue to become more diverse. Even more, staff and students of every ethnicity are stretching themselves to go to students and faculty of ethnicities different than their own and build mutual friendships that demonstrate the reconciling work of Jesus.



Data for the top chart is taken from the National Center for Education Statistics, nces.ed.gov.

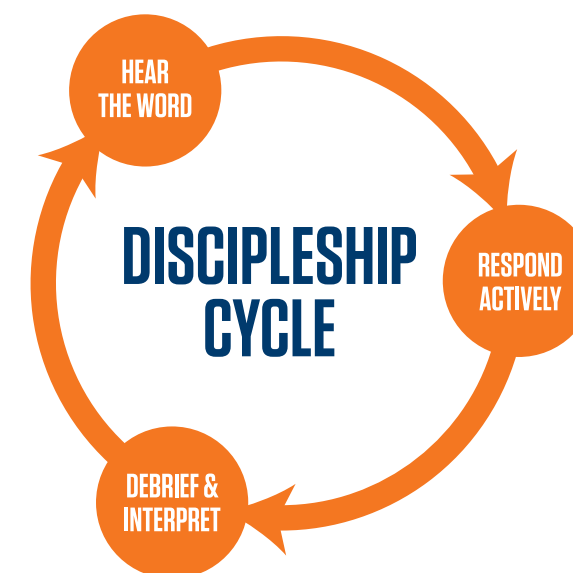


“My InterVarsity participation impacts me to this day. I truly didn’t understand the importance of Bible study training until I left college and met Christians who had no idea how to study the Bible. . . . I am forever grateful to the Lord for InterVarsity’s instruction in inductive Bible study and the importance of a disciplined daily quiet time.”

—Jenni Miller, 1991 InterVarsity alumna, Central Michigan University

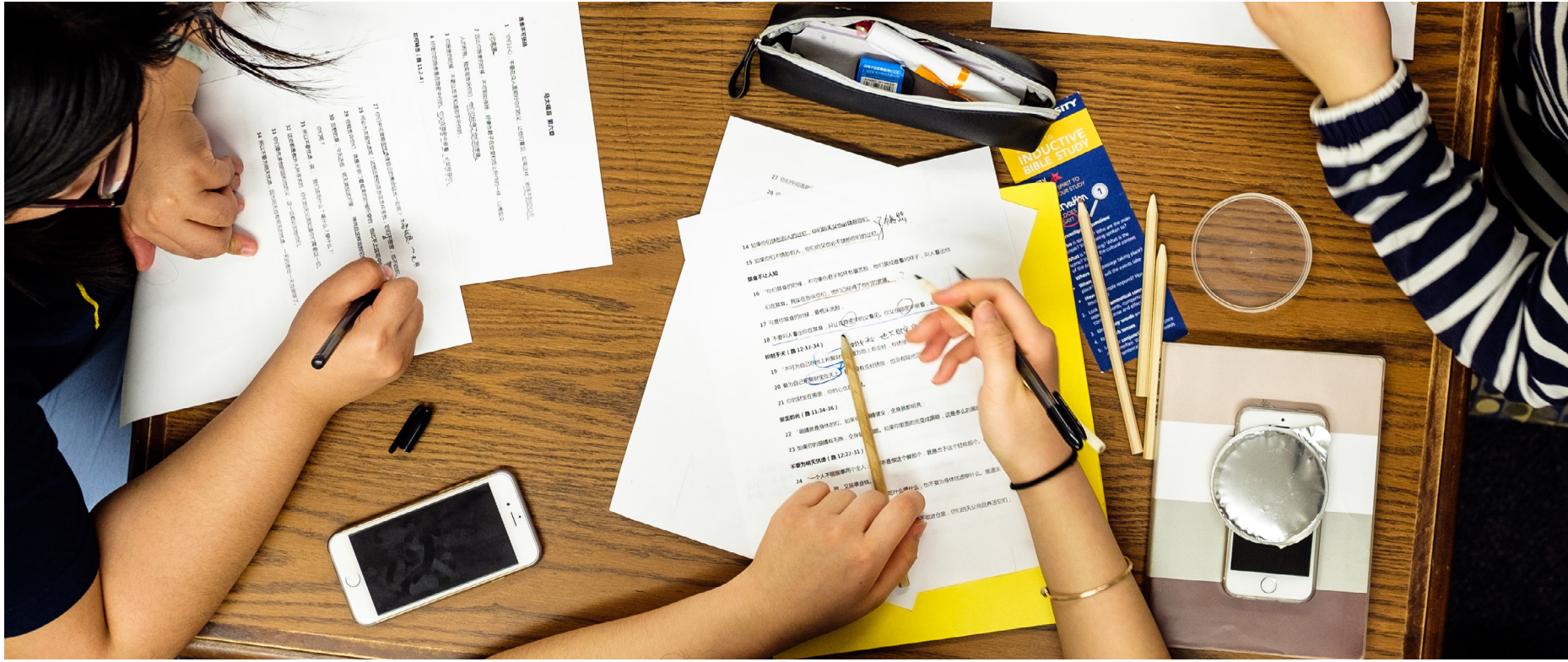
4 A PROVEN TRACK RECORD IN DEVELOPING LONG-TERM DISCIPLES OF JESUS

InterVarsity campus ministers continue to give students the tools and leadership experience they need to flourish spiritually after college. The practices InterVarsity students learn in their college years give them roots for a faith that continues for a lifetime.



One of our more recent tools is this diagram of a Discipleship Cycle. This framework helps guide anyone to “hear the Word” through prayer, Scripture study, and sermons, “respond actively” by developing concrete action steps in direct relation to what they heard from the Lord, and “debrief & interpret” the experience to deepen insight and learning. The tool can be used over and over again, in any context or situation students, faculty, alumni, and staff find themselves in.





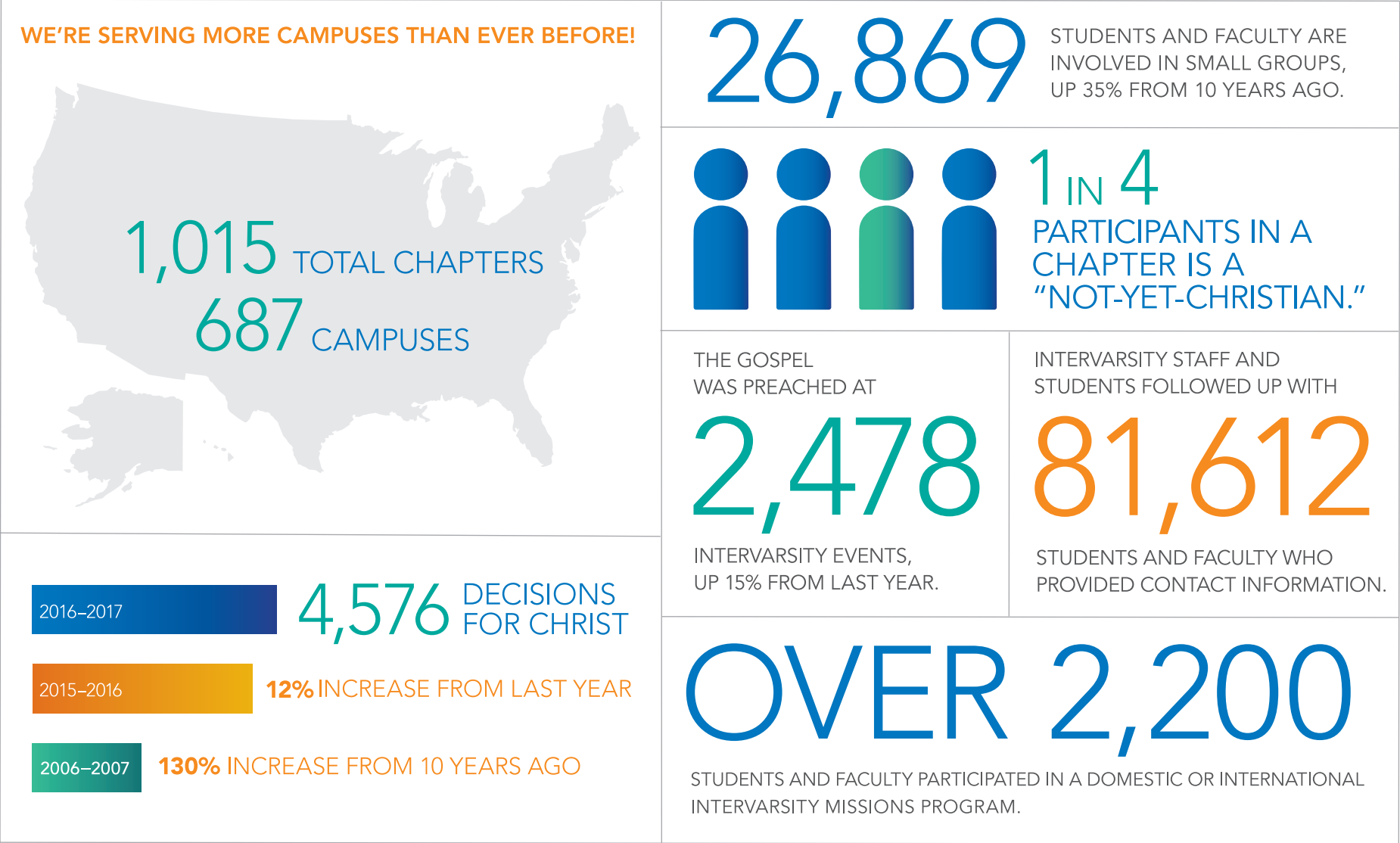
“My InterVarsity community taught me to think critically about Scripture and about my experiences, which helped shape and reorient my career goals to live out the Gospel story.”

—Anna, 2017 graduate, Wake Forest University, going on to pursue a career in medicine



LOOKING AT THE NUMBERS

The next few pages offer a glimpse of the fruit God brought in our 2016–2017 fiscal year. Join us in praising him!

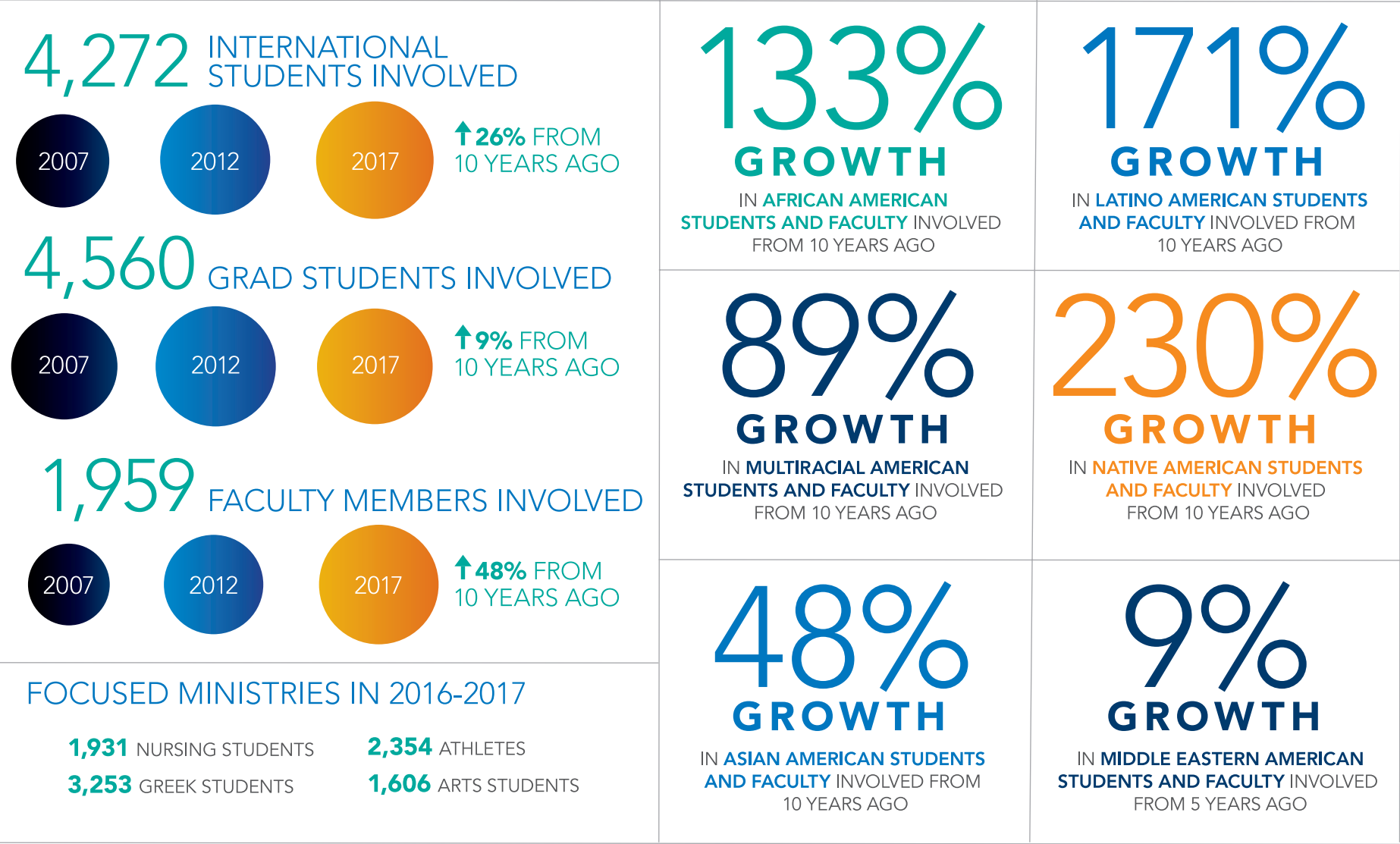




“InterVarsity Faculty Ministry has been a great support for me growing in Christ and academia, and I know that the Faculty Ministry staff are behind me not only in these things but also in prayer, and that they have the pulse of the academy. Many of them are scholars in their own right. All this makes an enormous difference.”

—Mary Poplin, Professor of Education, Claremont Graduate University

LOOKING AT THE NUMBERS





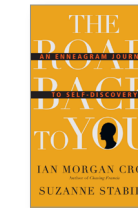
“There’s a reason why IVP is the premiere publisher for thoughtful Christians and culture influencers. Hands down you publish the best authors.”

—Stan Jantz, Executive Director of the Evangelical Christian Publishers Association (ECPA)

SHAPING CULTURE: HEART. SOUL. MIND. STRENGTH.

INTERVARSITY PRESS

For decades, InterVarsity Press has been producing resources that help readers see Jesus more clearly, understand Scripture in deeper ways, serve communities with greater effectiveness, look at cultural engagement differently, and lead churches and organizations with more wisdom. Last year was no exception. Once again, IVP books garnered dozens of awards for their excellent content and transforming impact, including some of the publishing industry’s most coveted awards.



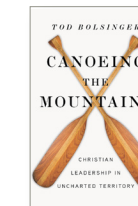
***The Road Back to You* by Ian Morgan Cron and Suzanne Stabile**

- More copies sold in its first year than any other book in IVP history!
- Rose to #45 on the ECPA’s bestseller list during summer 2017
- Starred review from *Publishers Weekly*
- *Foreword* INDIES Book of the Year Finalist



***Silence and Beauty* by Makoto Fujimura**

- 2017 Logos Bookstore Association Award
- *WORLD Magazine*’s Best Books of 2016 Short List
- *Foreword* INDIES Book of the Year Finalist
- An *Outreach Magazine* Resource of the Year



***Canoeing the Mountains* by Tod Bolsinger**

- An *Outreach Magazine* Resource of the Year





LEADERSHIP

EXECUTIVE LEADERSHIP TEAM

- Tom Lin**
President
Chief Executive Officer
- Jason Thomas**
Executive Vice President, Field Ministry
Chief Campus Ministry Officer
- DeeDee Wilson**
Executive Vice President,
Finance and Administration
Chief Financial Officer
- Paula Fuller**
Executive Vice President,
People and Culture
Chief Culture Officer
- Andrew Ginsberg**
Executive Vice President, Advancement
Chief Development Officer
- Greg Jao**
Director of External Relations and
Senior Assistant to the President
- Christina Olson**
Board Secretary
Executive Office Director and
Senior Assistant to the President

BOARD OF TRUSTEES

- Dennis O’Neal, Chair**
Dean, School of Engineering &
Computer Science, Baylor University
- Elizabeth Nielsen, Vice Chair**
Student/Bible Teacher
- Tom Lin, President**
InterVarsity Christian Fellowship/USA
- John Alsdorf**
Retired
- Katherine Leary Alsdorf**
Past Director, Center for Faith & Work,
Redeemer Presbyterian Church
- Kenneth Elzinga**
Professor of Economics,
University of Virginia
- William Gates**
Retired
- April Hanson**
Homemaker/Seminary Student
- Rudy Hernandez**
Self-Employed
- John Inazu**
Associate Professor of Law and Political
Science, Washington University
- Larry Langdon**
Partner, Mayer Brown LLP
- Ed Ollie**
Campus Pastor, Harvest Bible Church
- Jimmy Quach**
Business Entrepreneur, Good Paper
- Jane Lin**
Partner/Principal, Ernst & Young
- Barry Rowan**
Executive VP/CFO, Gogo
- Brenda Salter McNeil**
Associate Professor, School of Theology,
Seattle Pacific University
- Greg Smith**
Founder, Seeds on Earth



OUR FINANCES

2016–2017: Our income and expenses in thousands of dollars

Income

• Donations	\$78,229
• Sales & media	15,257
• Conference fees	5,823
• Other income	3,885
Total Income	103,194

Expenses

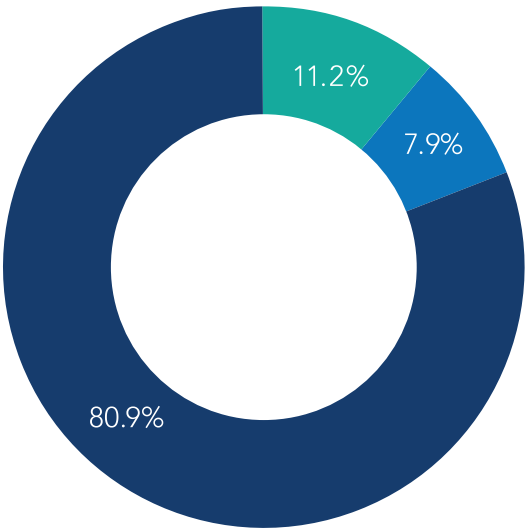
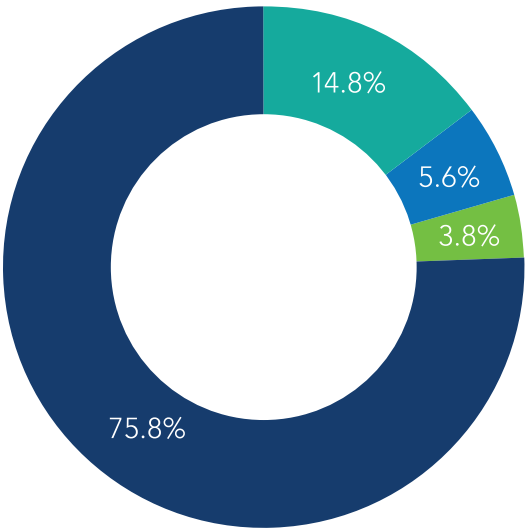
• Program	\$86,062
• Administrative	11,943
• Fundraising & communications	8,416
Total Expenses	106,421

Decrease in net assets* (\$3,227)

*Note: The decrease in net assets was covered from prior year increases.



InterVarsity’s financial reports were audited by Capin Crouse, LLP, and an unqualified opinion was issued on these reports. InterVarsity pledges financial accountability through our charter membership in the Evangelical Council for Financial Accountability (ECFA). The ECFA seal assures that gifts always will be used appropriately for InterVarsity ministry.



CAMPUSES WE'RE ON

Adelphi University
Agnes Scott College
Alabama State University
Albion College
Alfred University
Allegany College of Maryland
Alvernia University
American University
Amherst College
Anna Maria College
Appalachian State University
Aquinas College-Grand Rapids
Arcadia University
Arizona State University-Tempe
Art Center College of Design
Ashland University
Assumption College
Augustana College of Illinois
Aurora University
Austin College
Austin Community College-Round Rock
Babson College
Baker Univ. College of Arts and Sciences
Bakersfield College
Barry University
Bates College
Baylor University
Belhaven University
Bellevue University
Bellin College of Nursing
Belmont University
Beloit College
Bemidji State University
Berea College
Bergen Community College
Berklee College of Music
Bethel University-St. Paul
Bloomsburg University
Boise State University
Boston College
Boston University
Bowdoin College
Bowie State University
Bradley University

Brandeis University
Bridgewater State University
Broward Community College
Brown University
Bryant University
Bryn Mawr College
Bucknell University
Buena Vista University
Cal. Maritime Academy
Cal. Poly. State U.-San Luis Obispo
California State Polytechnic U.-Pomona
California State U.-Channel Islands
California State U.-Chico
California State U.-Dominguez Hills
California State U.-East Bay
California State U.-Fresno
California State U.-Fullerton
California State U.-Long Beach
California State U.-Los Angeles
California State U.-Northridge
California State U.-Sacramento
California State U.-San Marcos
California State U.-Stanislaus
Canada College
Carnegie Mellon University
Carroll University of Wisconsin
Carthage College
Case Western Reserve University
Castleton State University
Central College
Central Connecticut State University
Central Michigan University
Central New Mexico Cmty. College
Central Susquehanna Intermediate LPN
Chamberlain College of Nursing-Missouri
Chamberlain College of Nursing-Texas
Chamberlain College of Nursing-Troy
Chapman University-Orange
Christopher Newport University
Claremont Graduate University
Claremont McKenna College
Clark Atlanta University
Clark University
Clarkson University

Clemson University
Cleveland State University
Coastal Carolina University
Coe College
Colby College
Colgate University
College of Charleston
College of Lake County
College of New Jersey
College of San Mateo
College of Southern Maryland
College of St. Scholastica
College of the Holy Cross
College of the Ozarks
College of the Siskiyous
College of William and Mary
College of Wooster
Colorado College
Colorado Mesa University
Colorado School of Mines
Colorado State University-Fort Collins
Colorado State University-Pueblo
Columbia College Chicago
Columbia College of Missouri
Columbia University
Columbus State Community College
Connecticut College
Connors State College
Cooper Union for Adv. Sci. & Art
Cornell University
Creighton University
Crown College-St. Bonifacius
CUNY Bernard M. Baruch College
CUNY Brooklyn College
CUNY City College
CUNY Hunter College
CUNY John Jay College of Justice
CUNY Lehman College
CUNY New York City Tech. College
Curry College
Dakota State University
Dartmouth College
Davenport University-Grand Rapids
Davidson College

Daytona State College
De Anza College
Delaware Tech. Comm. College-Stanton
Delta College
DePaul University
DePauw University
Des Moines Community College
Diablo Valley College
Dickinson College
Dixie State University
Drake University
Drew University
Duke University
Duquesne University
East Carolina University
East Los Angeles College
East Tennessee State University
Eastern Connecticut State University
Eastern Florida State College-Cocoa
Eastern Florida State College-Melbourne
Eastern Florida State College-Palm Bay
Eastern Michigan University
Eastern University
Eastman School of Music
Eckerd College
Elizabethtown College
Elon University
Emmanuel College-Boston
Emory University
Endicott College
Essex County College-Newark
Evergreen State College
Fairfield University
Fairleigh Dickinson University-Teaneck
Fairmont State University
Flagler College
Florida Agr. and Mech. University
Florida Atlantic University
Florida Gulf Coast University
Florida Institute of Technology
Florida International University
Florida International U.-Biscayne Bay
Florida Southwestern St. Coll.-Ft. Myers
Florida State College at Jacksonville

Florida State University
Fond Du Lac Tribal and Community College
Foothill College
Fox Valley Technical College
Framingham State University
Francis Marion University
Franklin and Marshall College
Franklin College of Indiana
Fresno City College
Ft. Sanders School of Nursing
Ft. Lewis College
Full Sail Real World Education
Fullerton College
George Mason University
George Washington University
Georgetown University
Georgia Highlands College
Georgia Perimeter College-Clarkston
Georgia State University
Georgia Tech.
Glendale Community College of California
Gogebic Community College
Gonzaga University
Goucher College
Governors State University
Grand Canyon University
Grand Rapids Community College
Grand Valley State University
Green Mountain College
Grinnell College
Grove City College
Hamilton College-Clinton
Hamline University
Hampton University
Hannibal-LaGrange University
Harris-Stowe State University
Harvard University
Harvey Mudd College
Haskell Indian Nations University
Haverford College
Hawkeye Community College
Henry Ford Community College
Hillsborough Community College
Hillsdale College
Hofstra University
Hood College
Hope College
Houston Community College
Hudson Valley Community College
Humboldt State University
Illinois Institute of Technology

Illinois State University
Illinois Wesleyan University
Imperial Valley College
Indian River State College
Indiana/Purdue University-Ft. Wayne
Indiana/Purdue University-Indianapolis
Indiana State University
Indiana University-Bloomington
Indiana University-Kokomo
Indiana Wesleyan University-Marion
Iowa Central Community College
Iowa State University
Iowa Wesleyan College
Itawamba Community College
J. Sargeant Reynolds Community College
Jackson State University
Jacksonville State University
James Madison University
Johns Hopkins University
Johnson & Wales University
Johnson County Community College
Johnson State College
Joliet Junior College
Jones County Junior College
The Juilliard School
Kansas State University
Kennesaw State University
Kirkwood Community College
Knox College
Lake Forest College
Lake Superior State University
Lakeshore Technical College
Laramie Cty. Community College
Lawrence University
Lee University of Tennessee
Lees-Mcrae College
Lehigh University
Lenoir-Rhyne University
Letourneau University
Lewis and Clark College
Lincoln University of Missouri
Lindenwood University
Longview Community College
Longwood University
Lorain County Community College
Lower Columbia College
Loyola Marymount University
Loyola University of Maryland
Lyndon State College
Macalester College
Macomb Community College

Maine College of Art
Malone College
Manchester Community College
Manhattan School of Music
Marian College
Marietta College
Marquette University
Marshall University
Marshalltown Community College
Maryland Inst. College of Art
Maryville College
Massachusetts College of Art
Mass. College of Liberal Arts
Mass. College of Pharmacy-Boston
Mass. College of Pharmacy-Worcester
McDaniel College
Merced College
Mercer County Community College
Meredith College
Messiah College
Metropolitan State College
Metropolitan Tech. Comm. Coll.
Miami University-Oxford
Miami-Dade Community College
Michigan State University
Michigan Tech.
Middlebury College
Middlesex Community College
Millersville University
Millikin University
Mills College
Millsaps College
Milwaukee Area Technical College
Milwaukee Institute of Art Design
Milwaukee School of Engineering
Minnesota State University-Mankato
MiraCosta College
Mississippi College
Missouri Western State University
MIT
Modesto Junior College
Monmouth University
Monroe Community College
Montana State University-Billings
Montana State University-Bozeman
Montclair State University
Montserrat College of Art
Moorpark College
Morehouse College
Morehouse School of Medicine
Morgan State University

Mount Holyoke College
Napa Valley College
Nassau Community College
Nevada State College at Henderson
New College of Florida
New Jersey Institute of Technology
New Mexico Tech.
New York Inst. of Tech.
New York University
Newman University
Normandale Community College
North Carolina State University
North Dakota State University
North Florida Community College
Northeast Wisconsin Technical College
Northeastern University
Northern Arizona University
Northern Illinois University
Northern Kentucky University
Northern State University
Northern Virginia C.C.-Annandale
Northwest University
Northwest Vista College
Northwestern College of Iowa
Northwestern University
Nyack College
Oakland Community College
Oakland University
Oberlin College
Occidental College
Ohio State University-Columbus
Ohlone College
Oklahoma State University
Old Dominion University
Orange Coast College
Oregon State University
Our Lady of the Lake-San Antonio
Pacific Lutheran University
Palm Beach Atlantic University
Palomar College
Pasadena City College
Paul Smiths College of Arts and Science
Peabody Institute of Johns Hopkins U.
Pellissippi St. Tech. Community College
Penn State University-Harrisburg
Penn State University-Mont Alto
Penn State University-State College
Penn Valley Community College
Pierce College-Ft. Steilacoom
Pima Community College
Pittsburgh State University

Polk State College-Lakeland
Portland State University
Purdue University-Northwest
Purdue University-West Lafayette
Quinnipiac University
Radford University
Ramapo College
Randolph-Macon College
Reed College
Regis University
Rensselaer Polytechnic Institute
Rhode Island College
Rhode Island School of Design
Rice University
Richland Community College
Rider University
Rio Hondo College
Rivier College
Roanoke College
Rochester Institute of Technology
Rock Valley College
Rockhurst University
Rocky Mountain College
Roger Williams University
Rollins College
Roosevelt University
Rose-Hulman Institute of Technology
Roxbury Community College
Russell Sage College
Rutgers University-New Brunswick
Rutgers University-Newark
Sacramento City College
Saginaw Valley State University
Salem College
Salem State University
San Antonio College
San Diego State University
San Francisco State University
San Joaquin Delta College
San Jose State University
San Juan College
Santa Fe Community College of Florida
Santa Rosa Junior College
Savannah College of Art & Design Atlanta
School of Art Institute of Chicago
Scripps College
Seattle Pacific University
Seattle University
Seminole State College-Altamonte
Seminole State College-Oviedo
Seminole State College-Sanford/Lake Mary

Shasta College
Shaw University
Shepherd University of California
Shepherd University of West Virginia
Sierra College
Sierra Nevada College
Skidmore College
Skyline College
Smith College
Solano Community College
Sonoma State University
South Dakota Sch. of Mines & Technology
South Dakota State University
Southeastern Community College of Iowa
Southeastern Louisiana University
Southern Connecticut State University
Southern Illinois University-Carbondale
Southern Illinois University-Edwardsville
Southern Maine Tech. College-South Portland
Southern Methodist University
Southern New Hampshire University
Southern Utah University
Spelman College
St. Ambrose University
St. Cloud State University
St. Edward's University
St. Elizabeth School of Nursing
St. John's University of New York
St. Lawrence University
St. Louis Community College-Florissant
St. Louis Community College-Forest Park
St. Louis Community College-Meramec
St. Louis University
St. Mary's College of California
St. Mary's College of Maryland
St. Olaf College
St. Petersburg College
Stanford University
Stephen F. Austin State University
Stetson University
Stonehill College
SUNY at Albany
SUNY at Binghamton
SUNY at Buffalo
SUNY at Fredonia
SUNY at Geneseo
SUNY at Old Westbury
SUNY at Potsdam
SUNY at Stony Brook
SUNY University at Buffalo
Susquehanna University

Swarthmore College
Tallahassee Community College
Temple University
Tennessee Tech.
Texas A&M Health Science Center-Bryan
Texas A&M International University
Texas A&M University
Texas Southern University
Texas State University-San Marcos
Texas Woman's University-Dallas Center
Thomas Nelson Community College
Tidewater Comm. Coll.-Virginia Beach
Trinity College-Hartford
Trinity University
Truckee Meadows Community College
Tufts University
Tulsa Community College
Union College of New York
Union University
University of Akron
University of Alabama-Tuscaloosa
University of Alaska-Anchorage
University of Alaska-Fairbanks
University of Arizona
University of Arkansas-Fayetteville
University of Arkansas-Fort Smith
University of Bridgeport
University of California-Berkeley
University of California-Davis
University of California-Irvine
University of California-Los Angeles
University of California-Merced
University of California-Riverside
University of California-San Diego
University of California-Santa Barbara
University of California-Santa Cruz
University of Central Florida
University of Chicago
University of Cincinnati
University of Colorado-Boulder
University of Colorado-Colorado Springs
University of Connecticut
University of Delaware
University of Dubuque
University of Evansville
University of Florida
University of Georgia
University of Hartford
University of Hawai'i-Hilo
University of Hawai'i-Mānoa
University of Houston

University of Illinois-Chicago
University of Illinois-Urbana
University of Iowa
University of Kansas-Lawrence
University of Louisville
University of Maine-Farmington
University of Maine-Orono
University of Mary Washington
University of Maryland-Baltimore County
University of Maryland-College Park
University of Massachusetts-Amherst
University of Massachusetts-Boston
University of Massachusetts-Dartmouth
University of Massachusetts-Lowell
University of Memphis
University of Miami
University of Michigan-Ann Arbor
University of Michigan-Dearborn
University of Michigan- Flint
University of Minnesota-Duluth
University of Minnesota-Minneapolis
University of Minnesota-Morris
University of Mississippi
University of Missouri-Columbia
University of Missouri-Kansas City
University of Missouri-St. Louis
University of Montana-Missoula
University of Nebraska-Kearney
University of Nebraska-Lincoln
University of Nebraska-Omaha
University of Nevada-Las Vegas
University of Nevada-Reno
University of New England
University of New Hampshire-Durham
University of New Hampshire-Manchester
University of New Mexico-Albuquerque
University of North Dakota
University of North Florida
University of North Georgia-Dahlonega
University of North Texas-Denton
University of North Texas Health Sci. Ctr.
University of Northern Colorado
University of Northern Iowa
University of NC-Asheville
University of NC-Chapel Hill
University of NC-Charlotte
University of NC-Greensboro
University of NC-Wilmington
University of Oklahoma Health Sci. Ctr.
University of Oklahoma-Norman
University of Oregon

University of Pennsylvania
University of Pittsburgh
University of Puget Sound
University of Redlands
University of Rhode Island
University of Richmond
University of Rochester
University of San Diego
University of San Francisco
University of South Alabama
University of South Carolina-Columbia
University of South Florida-St. Petersburg
University of South Florida-Tampa
University of Southern California
University of Southern Maine
University of Tampa
University of Tennessee-Chattanooga
University of Tennessee-Knoxville
University of Tennessee-Martin
University of Texas Health Sci. Ctr.
University of Texas-Arlington
University of Texas-Austin
University of Texas-Dallas
University of Texas-El Paso
University of Texas-San Antonio
University of Texas-Tyler
University of Texas-Tyler Longview
University of the Pacific
University of Tulsa
University of Utah
University of Vermont
University of Virginia
University of Washington
University of West Florida
University of Wisconsin-Eau Claire
University of Wisconsin-Green Bay
University of Wisconsin-La Crosse
University of Wisconsin-Madison
University of Wisconsin-Marshfield
University of Wisconsin-Milwaukee
University of Wisconsin-Oshkosh
University of Wisconsin-Parkside
University of Wisconsin-Platteville
University of Wisconsin-Richland Center
University of Wisconsin-River Falls
University of Wisconsin-Rock County
University of Wisconsin-Sheboygan
University of Wisconsin-Stevens Point
University of Wisconsin-Stout
University of Wisconsin-Superior
University of Wisconsin-Whitewater
Ursinus College

Utah State University
Utah State University Eastern
Utah Valley University
Valencia Community College-Orlando
Vanderbilt University
Vassar College
Ventura College
Villanova University
Virginia Commonwealth University
Virginia Military Institute
Virginia Tech.
Wagner College
Wake Forest University
Washburn University of Topeka
Washington and Lee University
Washington College
Washington State University
Washington University in St. Louis
Washtenaw Community College
Watts School of Nursing
Waubensee Community College
Waukesha County Tech. College
Wayne State University
Weber State University
Webster University-St. Louis
Wellesley College
Wesleyan University
West Virginia University
West Virginia Wesleyan College
Western Connecticut State University
Western Michigan University
Western Nevada Community College
Western New England University
Westminster Choir College
Wheaton College-Norton
Whitman College
Wichita State University
Widener University
Willamette University
William Jewell College
William Paterson University
William Penn University
Williams College
Winona State University
Worcester Polytechnic Institute
Worcester State University
Yale University
Yavapai College
York College
York College of Pennsylvania
Youngstown State University

OUR VISION
IS TO SEE:

STUDENTS & FACULTY
TRANSFORMED,
CAMPUSES
RENEWED,
& WORLD CHANGERS
DEVELOPED.



INTERVARSITY

635 Science Drive, Madison, WI 53711-1099

www.intervarsity.org | 608.274.9001